



STEP 1 – PRIOR TO INSTALLATION

- A) Husky** only approves installing the flares according to these written instructions with the hardware provided. **WARNING:** Failure to install according to these instructions will invalidate the warranty. This includes, but is not limited to using alternative installation methods, hardware, or materials. **DO NOT USE:** Loctite, SuperGlue, or similar products on the hardware or the flares.
- B) Fit:** Verify the fit of the flares to vehicle. (Some filing, sanding, or cutting may be necessary to ensure proper fit).
- C) Painting:** (Optional) if paint is desired it must be done prior to installing flares on vehicle. Clean outer surface with a good grade degreaser. **DO NOT USE LACQUER THINNER OR ENAMEL REDUCER AS A DEGREASER.** Wipe outer surface thoroughly with a tack rag prior to paint. Application of plastic adhesion promoter for ABS plastic as per your paint system manufacturer's recommendations is required. Paint flares using a high quality enamel, or polyurethane automotive paint. If painting edge trim (not recommended), use a flex additive.
- D) Performance:** Using larger Tires may increase the area required to turn the vehicle. Some Tire/Rim combinations may require lowering bump stops and or installing steering stops to prevent tire from contacting flare.
- E) Exhaust System:** Modifications may be necessary to maintain a minimum 4" clearance between flares and exhaust pipes. (Exhaust gases should not vent directly onto flares)
- F) Metal Protection:** All exposed fasteners and bare metal should be treated with rust resistant paint **BEFORE** installing flares. Spray inner fender wells with undercoating **AFTER** flare attachments have been completed.
- G) Decals:** Flares may interfere with existing decals on vehicle. If you wish, remove decals prior to installation of flares.
- H) Care & Cleaning:** Husky fender flares are built to last; any detergent you use to wash your vehicle is sufficient to clean the flare. Do not use any harsh abrasive detergents.

Toyota Extend-A-Fender® Fender Flares Set of 4

Set Part #28031924

Rev-6 3/16/2016

TOOLS FOR EASY INSTALLATION:

- Pry Tool
- Flat Head Screwdriver
- Socket Wrench
- 10mm Socket
- 1/2" Socket
- 7/16" Socket
- Electric Drill
- 5/16" Drill Bit
- Grease Pencil
- #2 Phillips Screwdriver
- Utility Knife or Cutting Tool

PLEASE READ: Dirt and debris can become lodged between the fender flares and the vehicle's fenders, causing scratching and paint wear from vibration. Husky Liners is not responsible for any damage, and the installation of our fender flares is done with the buyer's understanding that this scratching and paint wear may occur.

LIMITED LIFETIME WARRANTY AGAINST ANY MANUFACTURING DEFECTS

- To claim a warranty, you must provide Proof of Purchase.

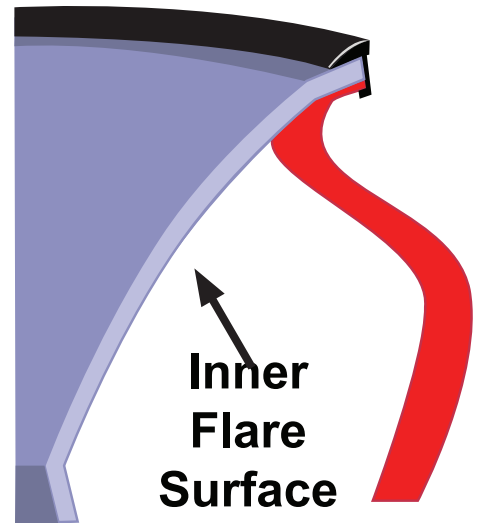
Included in Hardware Kit:

- | | | | | | |
|--------------------------------------------------------------------------------------------------------------------------------|------------------------------------------------------------------------------------------------------------------------------------------------------|---------------------------------------------------------------------------------------------------------------------------------------------------------|-----------------------------------------------------------------------------------------------------------------------------------------------------|--------------------------------------------------------------------------------------------------------------------------------------|-----------------------------------------------------------------------------------------------------------------------------------------------------|
| 1. 
CL1-0022,
#10 "U" Clip,
4 pcs | 2. 
SW1-0056,
#8 x 3/4"
PH Screw,
4 pcs | 3. 
SW1-0036,
M6-.3 x 20mm Hex
Magni Black Screw,
24 pcs | 4. 
WA1-0017,
1/4 x 1-1/4" Black
Fender Washer
8 pcs | 5. 
NU1-0001,
1/4-20 Zinc
Nut,
4 pcs | 6. 
SW1-0005,
1/4-20 x 3/4"
HxHd Slot Screw,
4 pcs |
| 7. 
ET1-0002,
Edge Trim Tool,
1 pc | 8. 
GP1-0022,
Small Wiper Style
Edge Trim,
324 inches | 9. 
RV1-P003,
5/16" Nylon
Retainer,
4 pcs | 10. 
GR1-0002,
#14 Nut Plastic
Grommet,
2 pcs | | |

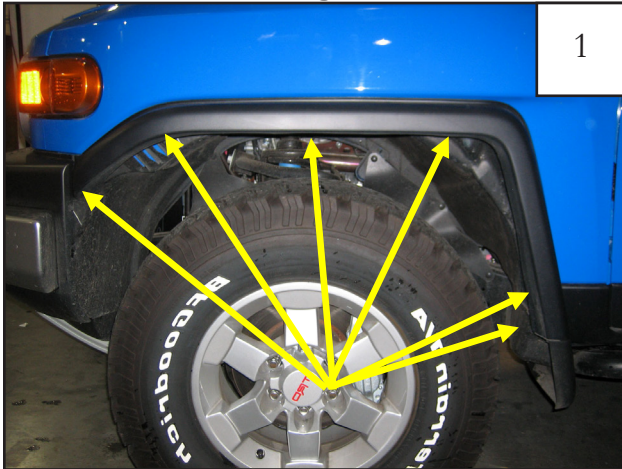
STEP 2 - EDGE TRIM INSTALLATION

A. Peel two to three inches of red vinyl backing away from Edge Trim (GP1-0022) tape. Applying the adhesive side of the edge trim to the inner side of the flare, affix the edge trim to the top edge of the flare (the portion that comes in contact with the vehicle).

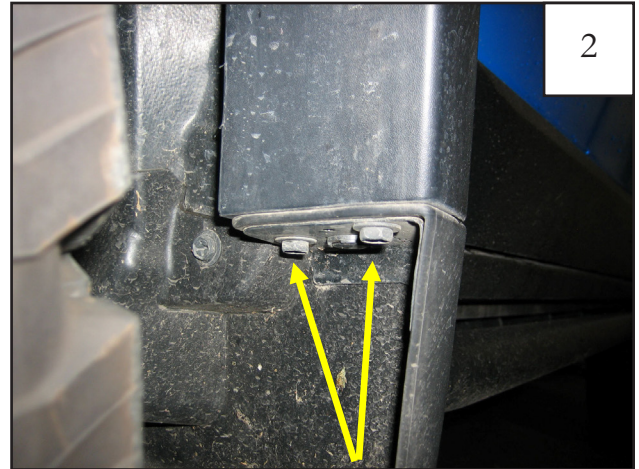
B. Press edge trim into place along the top edge of the flare in one-foot increments, pulling red vinyl backing free as you continue to work your way around the top edge of the flare.



Front Factory Flare Removal:



Remove six bolts from wheel well using 10mm socket.



Remove two bolts connecting factory flare to mud flap as shown. *Note: (1) Factory plastic fastener to be removed in Step 3 is located here as well.*



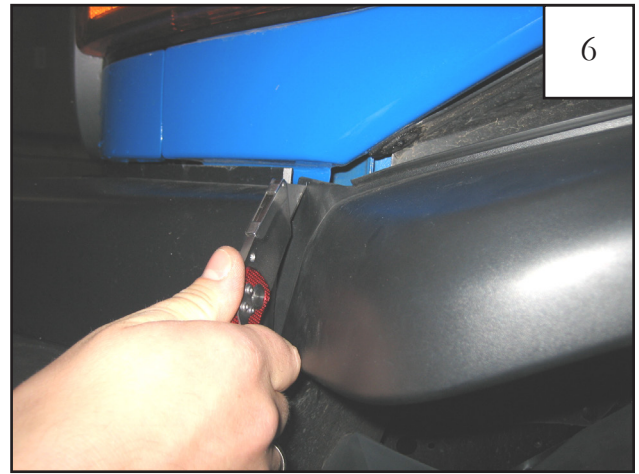
Remove three factory plastic fasteners using a flat head screwdriver or pry tool.



Using a utility knife, cut along seam connecting factory flare to rocker. Cut down to mud flap area.



Using a utility knife, cut splash guard flush with edge of sheet metal.



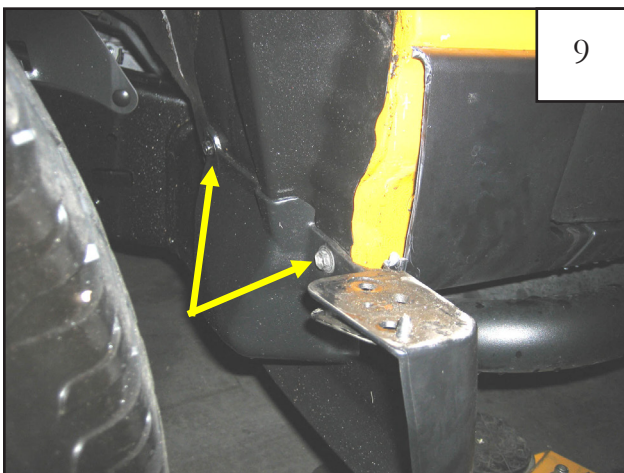
Cut front of factory flare along bumper, taking care not to cut bumper.



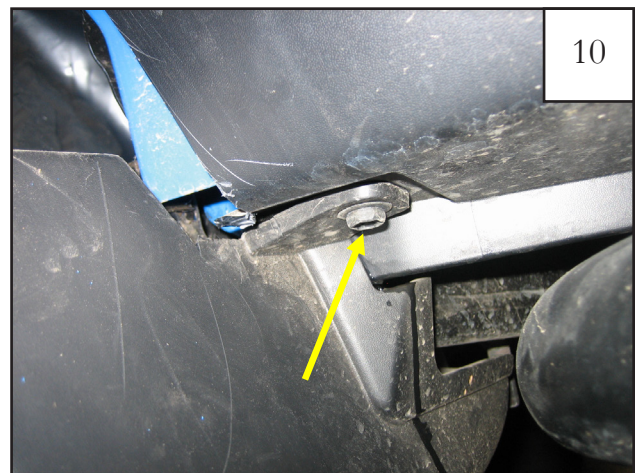
Trim remaining plastic flush with bumper.



Trim plastic tab along seam.

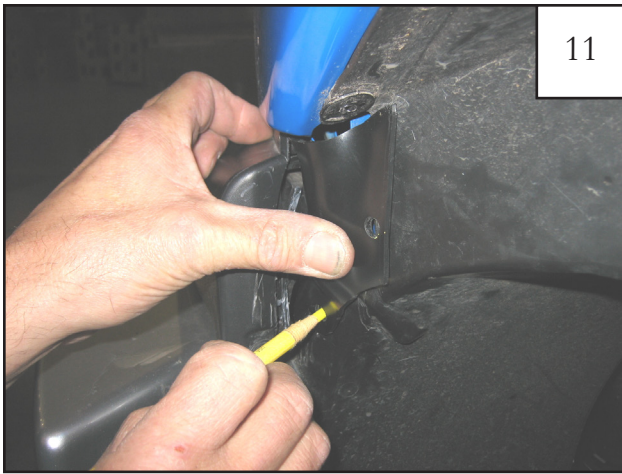


Remove mud flap bolts as shown in image above (2 places).



Remove the third mud flap bolt, and remove mud flap.

Front Flare Installation Procedures:



Holding Front Inner Piece on front of wheel well, next to bumper, use a grease pencil to mark two clip locations.



Remove Front Inner Piece and drill two 5/16" holes on marks made in Step 11.



Slide the supplied "U" Clips over holes drilled in Step 12 (2 places). *Note: Some trimming of plastic may be required for correct clip alignment.*



Position Inner Front Piece on vehicle, aligning holes in part with holes in clips installed in Step 13. Install supplied Pan Head Screws

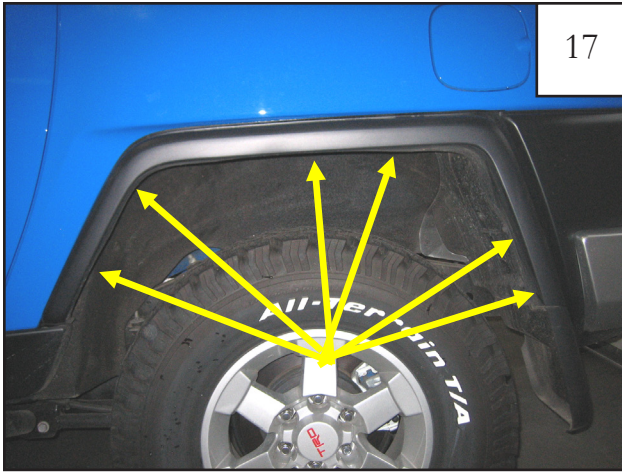


Position Flare on fender. Install five supplied #14 Hex Head Bolts. Do not tighten at this time. *Note: It is helpful to install one of the top bolts first.*

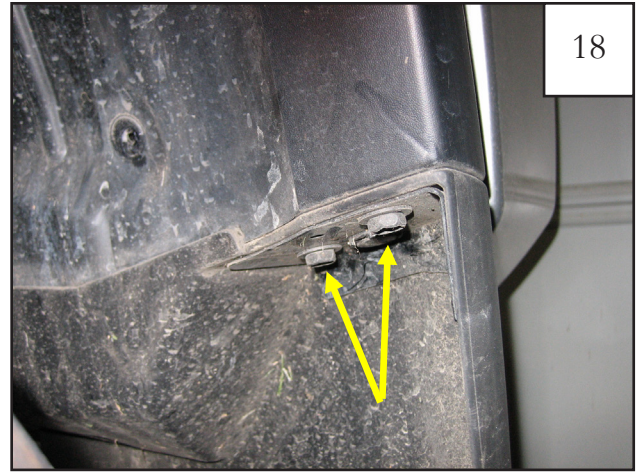


Install one supplied Christmas Tree Fastener in top hole. Check that edge trim is seated correctly, then tighten all bolts.

Rear Factory Flare Removal:



Using a 10mm socket, remove the six factory bolts.



Remove two factory bolts from mud flap.



Using a pry tool or flat head screwdriver, remove one plastic fastener.



Remove one plastic fastener from mud guard.



Remove bolt from mud guard located inside wheel well.

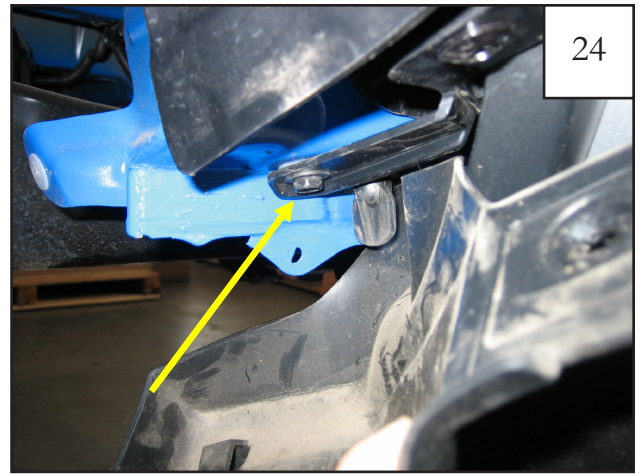


Pull back rear plastic panel to access bolt inside. Plastic clips will release, making a popping sound.



23

Remove bolt located behind rear plastic panel. *Note: If the socket does not fit in the enclosed space, a phillips screwdriver will work.*



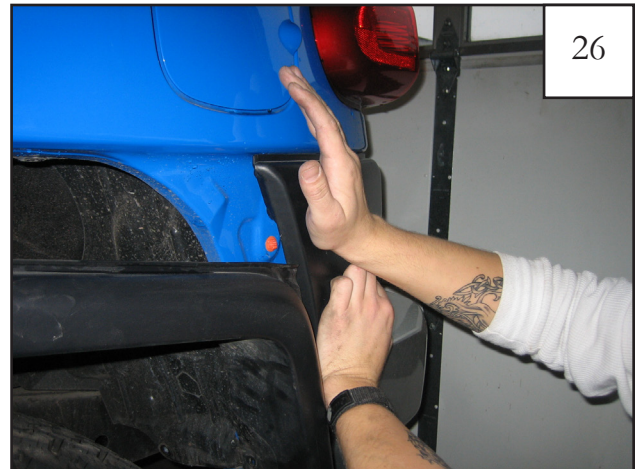
24

Remove 10mm bolt to remove mud flap completely.



25

Remove bolt from underside of factory flare (behind panel). Pry flare from fender, releasing plastic clips.



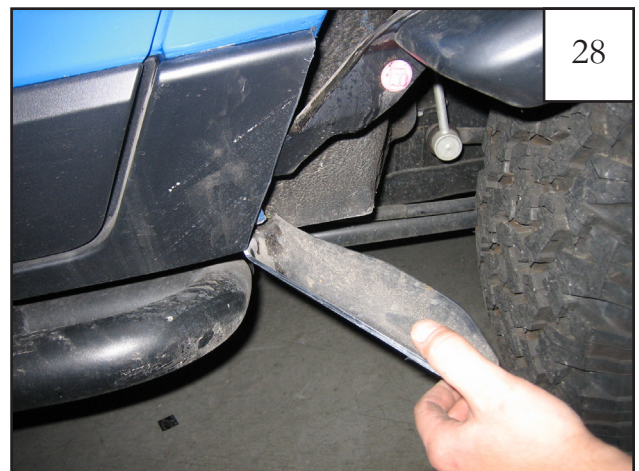
26

Remove bolt from underside of factory flare (behind panel). Pry flare from fender, releasing plastic clips.



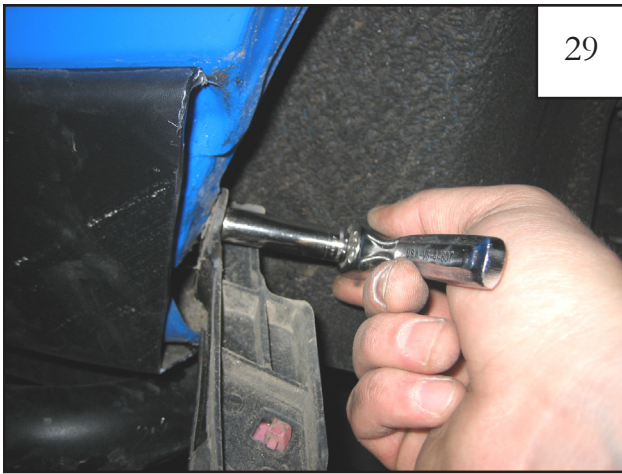
27

At front of wheel well, use pry tool or knife to pry plastic grommet from sheet metal. discard grommet, leaving a square hole.



28

Cut along rocker panel so that it is trimmed flush with sheet metal.



29

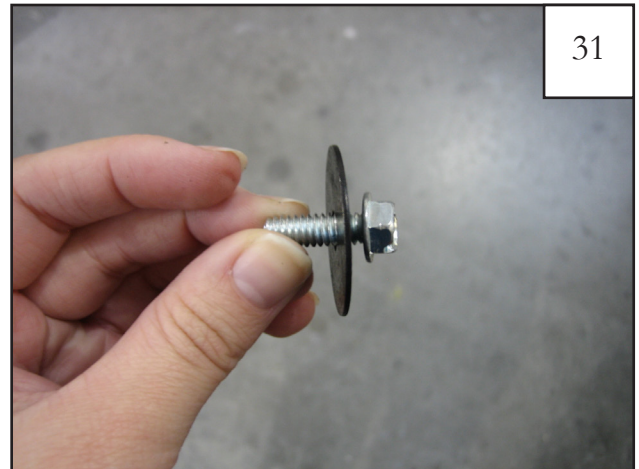
Remove last bolt holding the rear flare on, at the front of the wheel well. Remove flare.

Rear Factory Flare Installation:



30

Install a supplied plastic grommet in square hole at front of wheel well.



31

To attach Rear Main Flare to Lower Rear, slide a supplied Large Washer onto a supplied Steel Bolt.



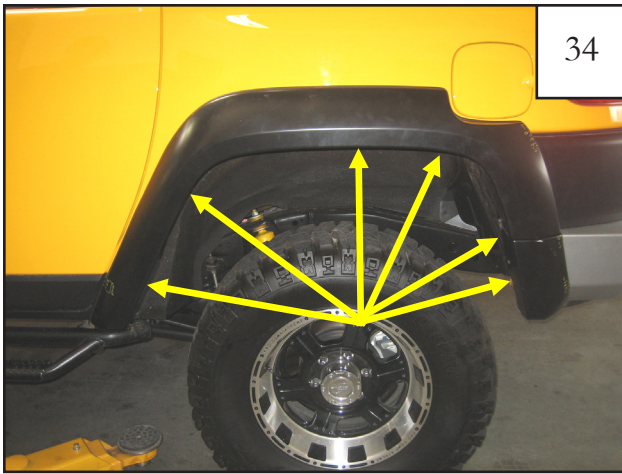
32

Align the holes in the Rear Main Flare with the holes in the Lower Rear, slide Bolt/Washer assembly through (2) places.

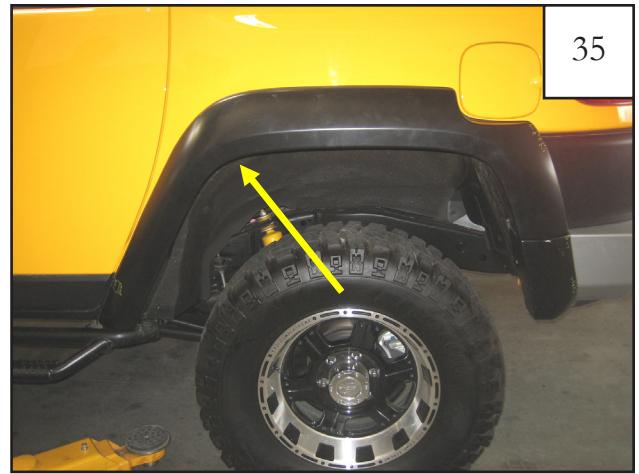


33

Slide a supplied Large Washer onto backside of bolt, and thread a supplied Nylock Nut onto bolt. Using a 10mm socket and 7/16" wrench, tighten bolts.



Position Flare on fender. Install six supplied #14 Hex Head Bolts. Do not Tighten. *Note: It is helpful to install out of the stop screws first.*



Install one supplied Christmas Tree Fastener in top forward hole. Check that edge trim is seated correctly, then tighten all bolts.

Edge Trim Tool Procedures:



Using supplied Edge Trim Tool (ET1-0002), seat edge trim against vehicle by hooking curved end under edge trim at one end of flare. Next, slide around outer edge of flare to the other end.



Using flat end of supplied Edge Trim Tool (ET1-0002), seat edge trim against flare by inserting straight end between edge trim and flare at one end. Next, slide around entire edge to the other end.